

The World of Bookbinding.



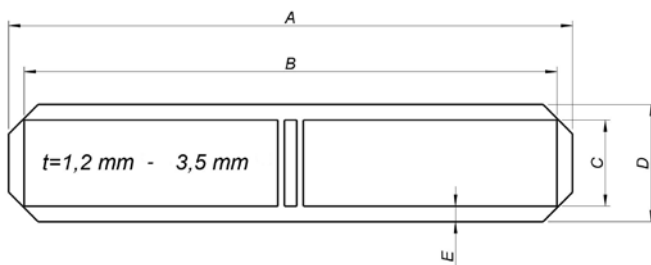
PräKant

Turning-in machine and case press

The **PräKant** is a turning-in machine designed to turn in and press down the edges during the production of book covers, posters, calendar backs, notice boards etc. and may also be used for rubbing down laminated or mirrored covers.

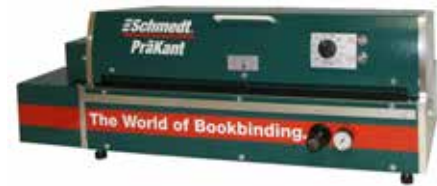
It may be used as a stand-alone machine as well as inline with a gluing machine and the **PräDeck** case-maker as part of the **PräDeka** system.

In its standard version, the **PräKant** can process the following formats:



Dim.	min.	max.
A	150 / 180 mm *3	694 mm
B	120 / 150 mm *3	664 mm
C	120 / 150 mm *3	664 mm
D	150 / 188 mm *3	694 mm
E	15 / 19 mm *3	22 mm

*3 When selecting the programme for stiff binding materials, the minimum size increases.



without extension tables

Technical specifications:

Machine (DxWxH):	46 x 97 x 34 cm (w/o tables) 111 x 97 x 34 cm (w/ tables)
Weight:	65 kgs
Power supply:	230 V - 50 Hz
Air pressure:	min. 6 bar
Output:	60 - 150 pcs / h
Formats:	s. left
Board thickness:	1.2 - 3,5 mm
Scope of delivery:	Basic machine, 2 extension tables

Subject to technical alterations.

The World of Bookbinding.

PräKant

The principle of operation:

After gluing the cover boards and the spine hollow (e. g. on our **PräDeck** or in the **PräDeka** system) the open case is inserted into the intake slot with its long side first. Air is fed automatically to ensure easy insertion of the cover. Correct positioning of the cover is indicated by green blinking of the operator button. As soon as the case is pushed far enough into the machine, the turning-in process is started automatically. The case is pulled in and the first edge is turned in. Then the case is pulled in completely. The cover material is pressed on to the boards and the second edge is turned in. Then the case is ejected to the front on to the table. Now the four corners need to be tucked in manually. The case is then turned by 90° and re-inserted into the slot with its short side



first, and the two remaining edges are turned in. Depending on the preselected programme, the finished book case is ejected either to the front or rear of the machine.

12 different programmes for turning-in and pressing down with different ways of ejection and 2 speeds are available integrate the machine perfectly into the workflow.

The brush height of the machine may be adjusted individually to adapt to different materials and especially to the board thickness. The thinner and/or softer the board, the higher the value has to be set. All kinds of different products may thereby be turned in at optimum quality.

In addition to the **PräKant** we recommend the following machines and devices for the production of book cases:

- **Präzis Pro** cover material shears for full-bound cases with built-in corner cutter
- **PräziCoat XS** gluing machine
- **PräDeck** manual casemaker
- **PräRund** case-rounding machine
- **PräDeka** combined case-making system with **PräziCoat XS**, **PräDeck** and **PräKant**

The picture below shows the **PräDeka** system consisting of the gluing machine **PräziCoat XS**, the casemaker **PräDeck** and the turning-in machine **PräKant**, combined on a special stand, the **PräDeka** system base.



Advantages of PräKant:

- Wide format range
- No adjustments to different sizes
- No bubbles as the case is pressed during each cycle
- No hollow edges as the brush height is adjustable